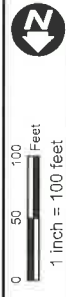


Legend

- 2-ft Contours
- City Boundary
- Parcels
- Approx. Drainage Path
- Modular Block Wall
- Bank Stabilization
- Strip Map Limits
- Existing Stormwater Networks
- Gravity Main
- Inlet
- Manhole
- Inlet/Outfall
- Fitting
- Existing Sanitary Networks
- Gravity Main
- Manhole

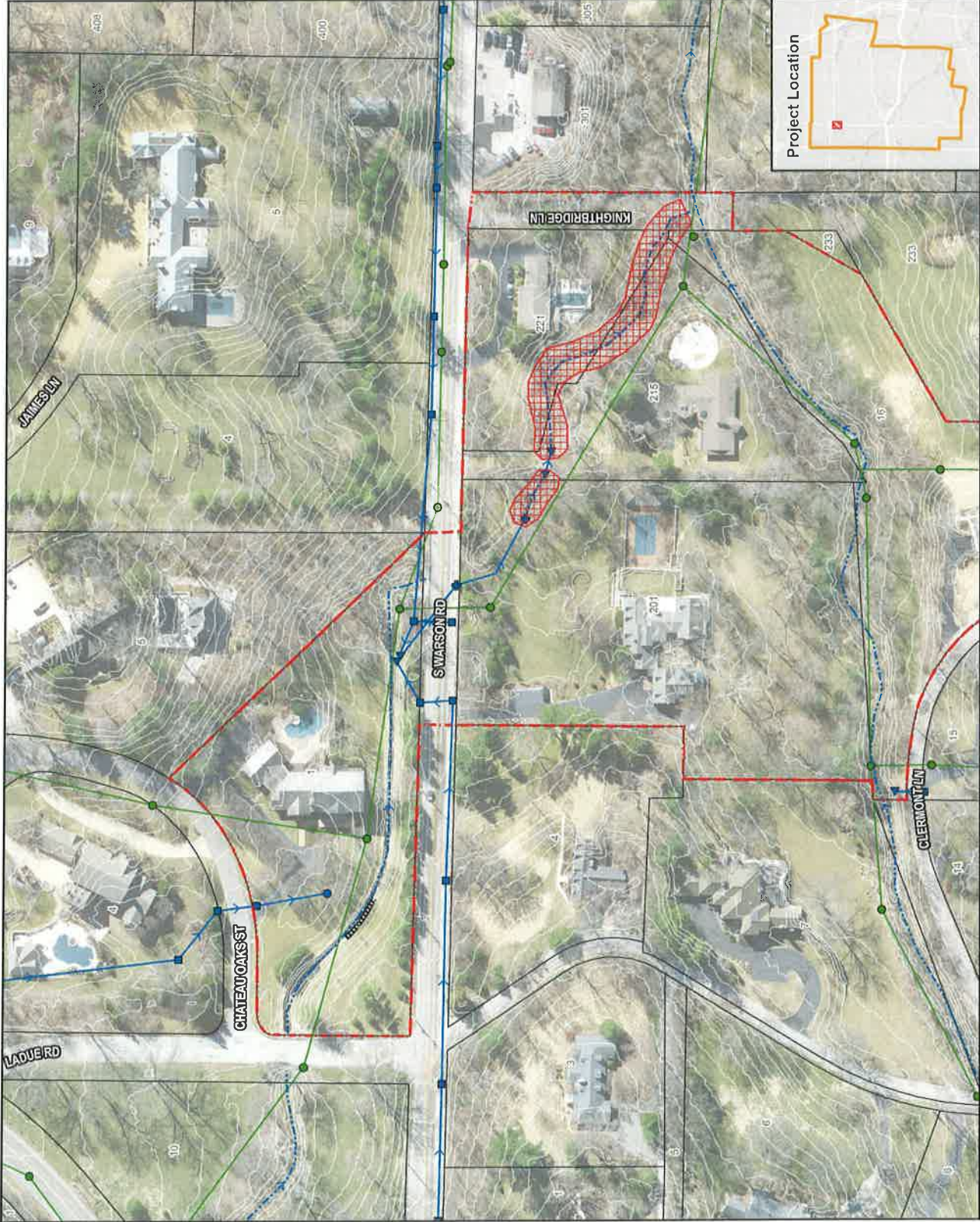


Easements Required	5
Properties Benefited	5
Properties Impacted	5
Project Benefit Points	418.60
Conceptual Project Cost	\$500,819.89
Benefit to Cost Ratio	0.836

Problem Description
Stream erosion threatening structures and a failing retaining wall.

Proposed Solution Description
Bank stabilization to reduce erosion and replace the failed portion of the retaining wall.

City of Ladue Storm Water Management Program
Project 1625.02
 Pebble Creek at Warson Road Bank Stabilization



Created by AutoCAD LT 2017 11:08:07 PM Location: J:\PROJECTS\2017\1625\162502\162502.dwg Project: 1625.02.dwg