

Legend

- 2-ft Contours
- City Boundary
- Parcels
- Proposed Improvements:
 - Approx. Drainage Path
 - Stormwater Double Inlet
 - Stormwater Inlet
 - Stormwater Inlet/Outlet
 - Curb
 - Stormwater Pipe
 - Private Pipe
 - Replace Ex. Stormwater Line
 - Trench Drain
 - Replace Road
 - Strip Map Limits
 - Existing Stormwater Network
 - Gravily Main
 - Inlet
 - Manhole
 - Inlet/Outlet
 - Existing Sanitary Network
 - Gravily Main
 - Manhole
 - Regulatory Floodway
 - 1.0% Annual Chance Flood Hazard



Easements Required	27
Properties Benefited	54
Properties Impacted	27
Project Benefit Points	3,502.90
Conceptual Project Cost	\$2,732,178.50
Benefit to Cost Ratio	1.282

Problem Description
Yards, road, & structure flooding due to uncontrolled runoff & an inadequate storm

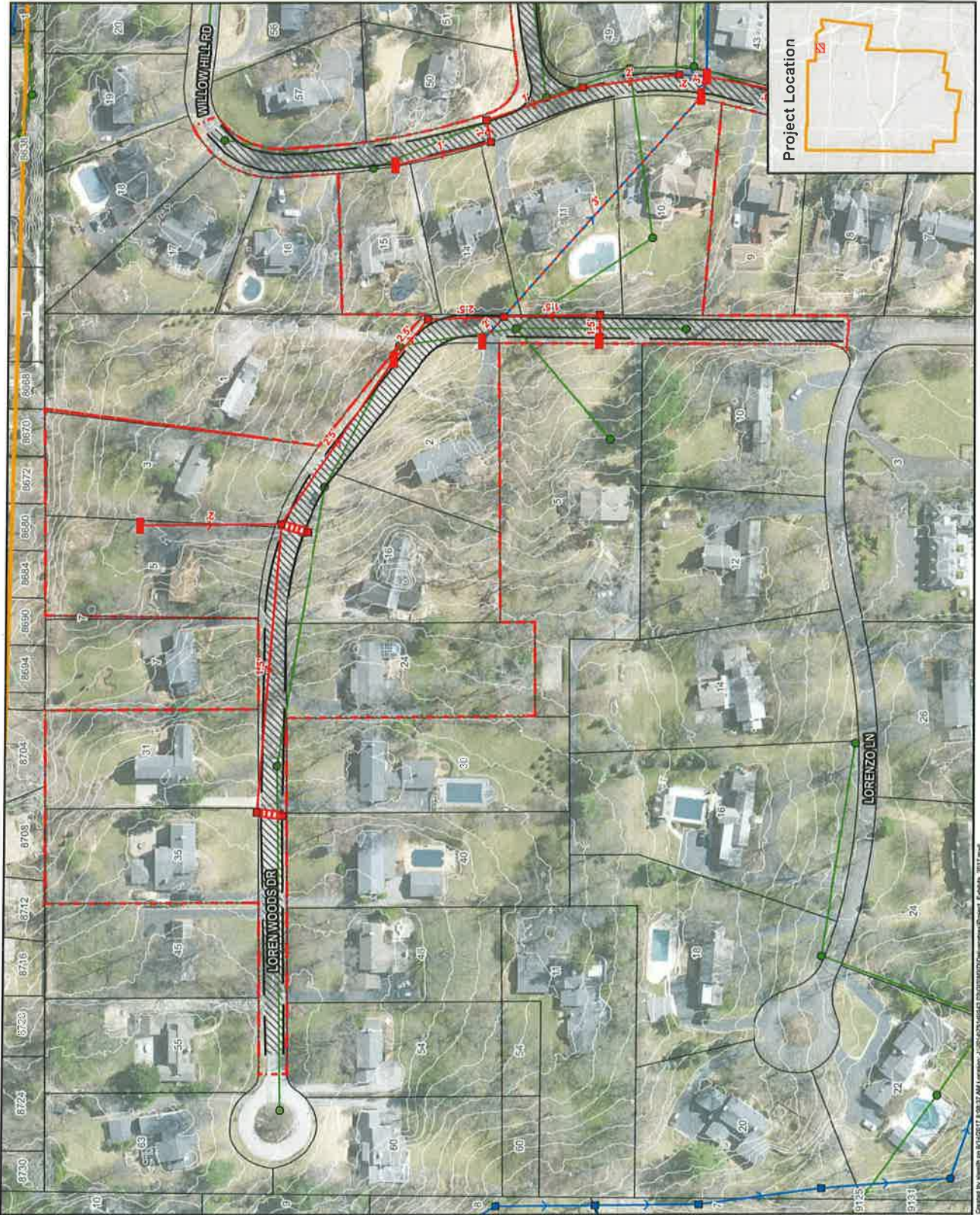
Proposed Solution Description
Extend the storm system west and reroute the main trunk along Willow Hill Road.

City of Leasde Storm Water Management Program

Project 1614A

Willow Hill - Reroute Along Road





- Legend**
- 2-ft Contours
 - City Boundary
 - Parcels
 - Proposed Improvements**
 - Stormwater Double Inlet
 - Stormwater Inlet
 - Curb
 - Stormwater Pipe
 - Replace Ex. Stormwater Line
 - Trench Drain
 - Replace Road
 - Strip Map Limits
 - Existing Stormwater Network
 - Gravity Main
 - Inlet
 - Manhole
 - Inlet/Outfall
 - Existing Sanitary Network
 - Gravity Main
 - Manhole

Easements Required	27
Properties Benefited	54
Properties Impacted	27
Project Benefit Points	3,502.90
Conceptual Project Cost	\$2,732,178.50
Benefit to Cost Ratio	1.282

Problem Description
Yard, road, & structure flooding due to uncontrolled runoff & an inadequate storm

Proposed Solution Description
Extend the storm system west and reroute the main trunk along Willow Hill Road.

City of Ladue Storm Water Management Program

Project 1614A

Willow Hill - Reroute Along Road